

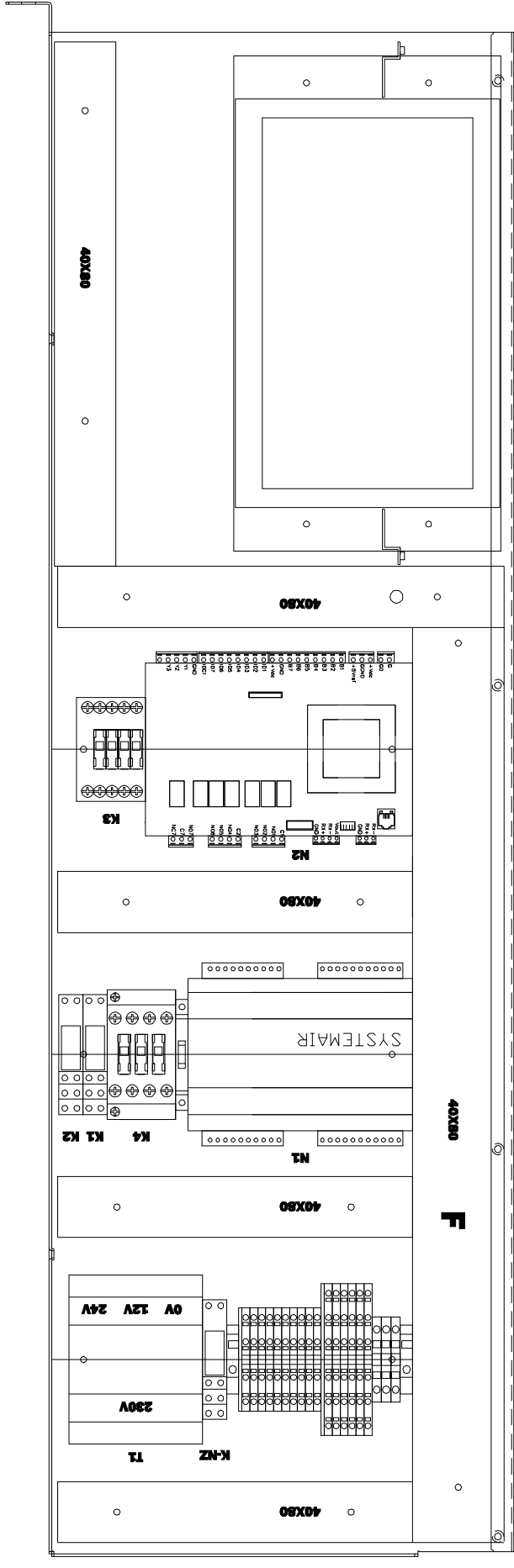
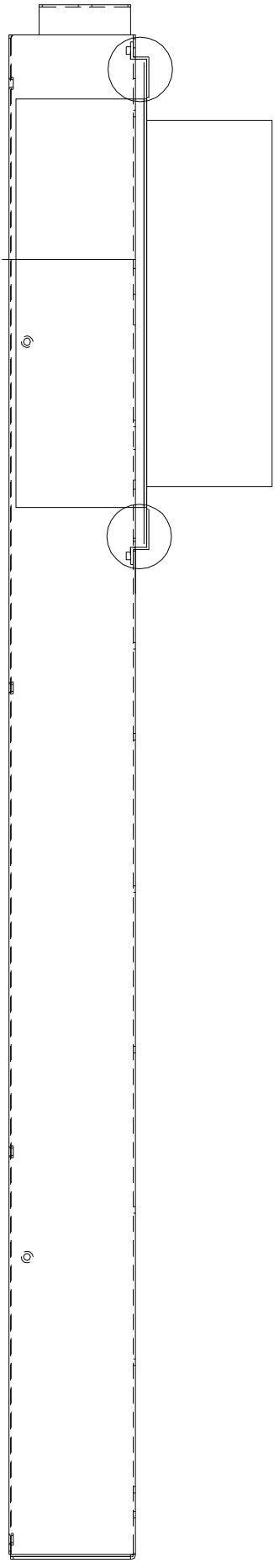
SHEET	TITLE
1	INDEX
2	LAYOUT
3	AUXILIARY CIRCUIT
4	AUXILIARY CIRCUIT
5	AUXILIARY CIRCUIT
6	AUXILIARY CIRCUIT
7	AUXILIARY CIRCUIT
8	AUXILIARY CIRCUIT
9	AUXILIARY CIRCUIT
10	AUXILIARY CIRCUIT
11	AUXILIARY CIRCUIT
12	CIRCUITO AUSILIARIO
13	TERMINAL BLOCK
14	PART LIST

CAREL

IT IS NOT ALLOWED TO DELIVER TO THIRD PARTIES OR REPRODUCE THIS DOCUMENT
OR USE THE CONTENT OR TRANSFER IT TO THIRD PARTIES WITHOUT OUR EXPLICIT PERMISSION.
OFFENDERS ARE LIABLE FOR DAMAGES SUFFERED. CONTINUE TO BE RESERVED
ALL RIGHTS UNDER PATENTS OR DESIGNS.

DESIGN	VOLTAGE EXERCISE	230V/400V	STANDARD	PROTECTION
SERIES	VOLTAGE CONTROLS	24V		
JOB	VOLTAGE SIGNALS			
CLIENT				
		DATE	NAME	
	DRAFT	31/08/2016	M.B.	
	VIEW			
	APPR.			
REV. REVISION	DATE	NAME		
			CM00009756R2	
			EP SYSTEMAIR GENIUS MODEL	
			CM00009756R2.DWG	
				SHEET 1
				T.F. 14

00 01 02 03 04 05 06 07 08 09 10 11 12 13 14 15



unit of measure: mm

LAYOUT

PROJECT CM00009756R2.DWG

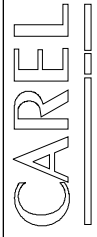
CLIENT

DATE 31/08/2016

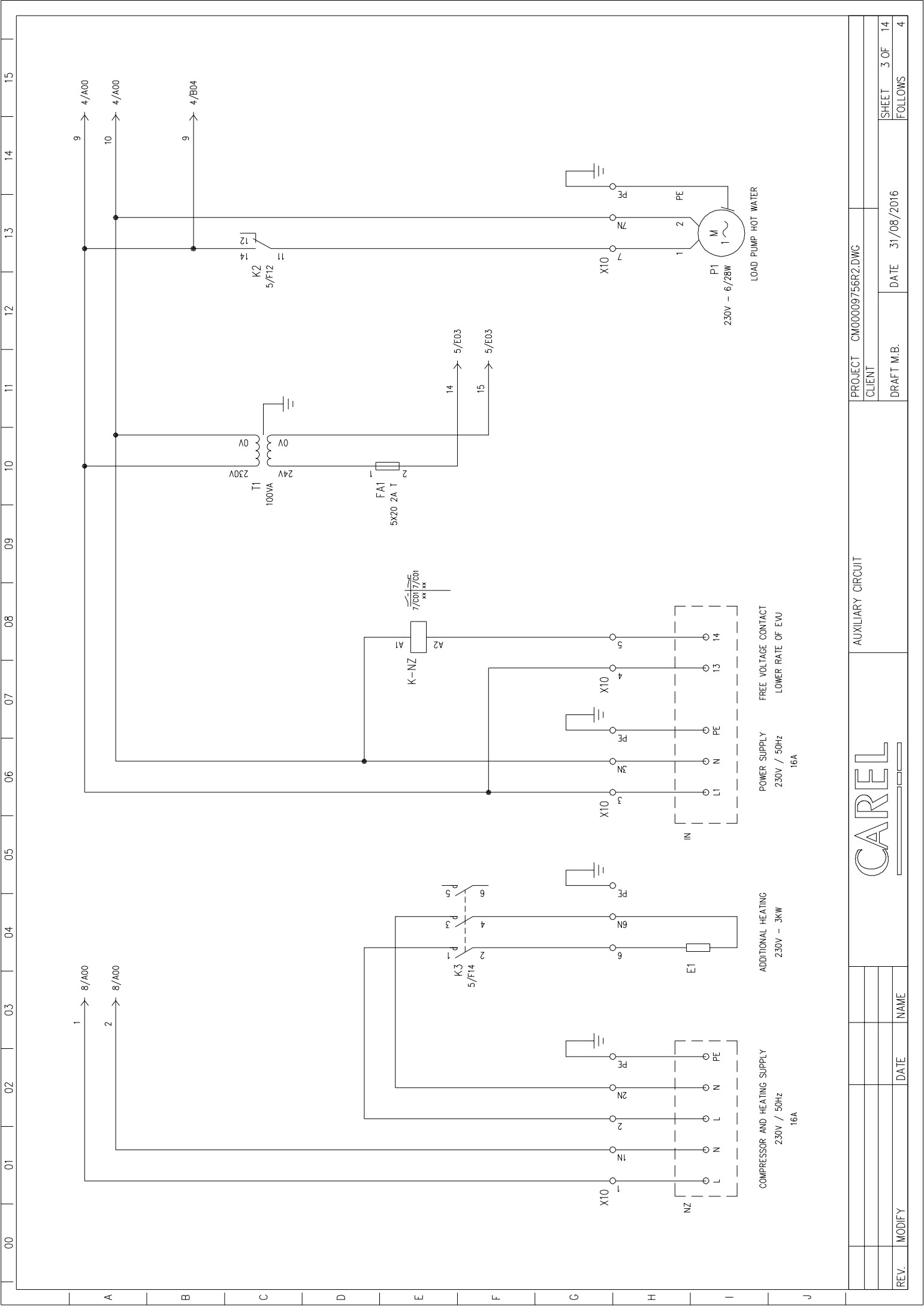
DRAFT M.B.

SHEET 2 OF 14

FOLLOWS 3



REV.	MODIFY	DATE	NAME



AUXILIARY CIRCUIT

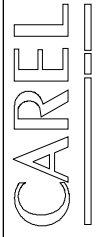
PROJECT CM00009756R2.DWG

CLIENT

DRAFT M.B.

DATE 31/08/2016

SHEET 3 OF 14
FOLLOWS 4



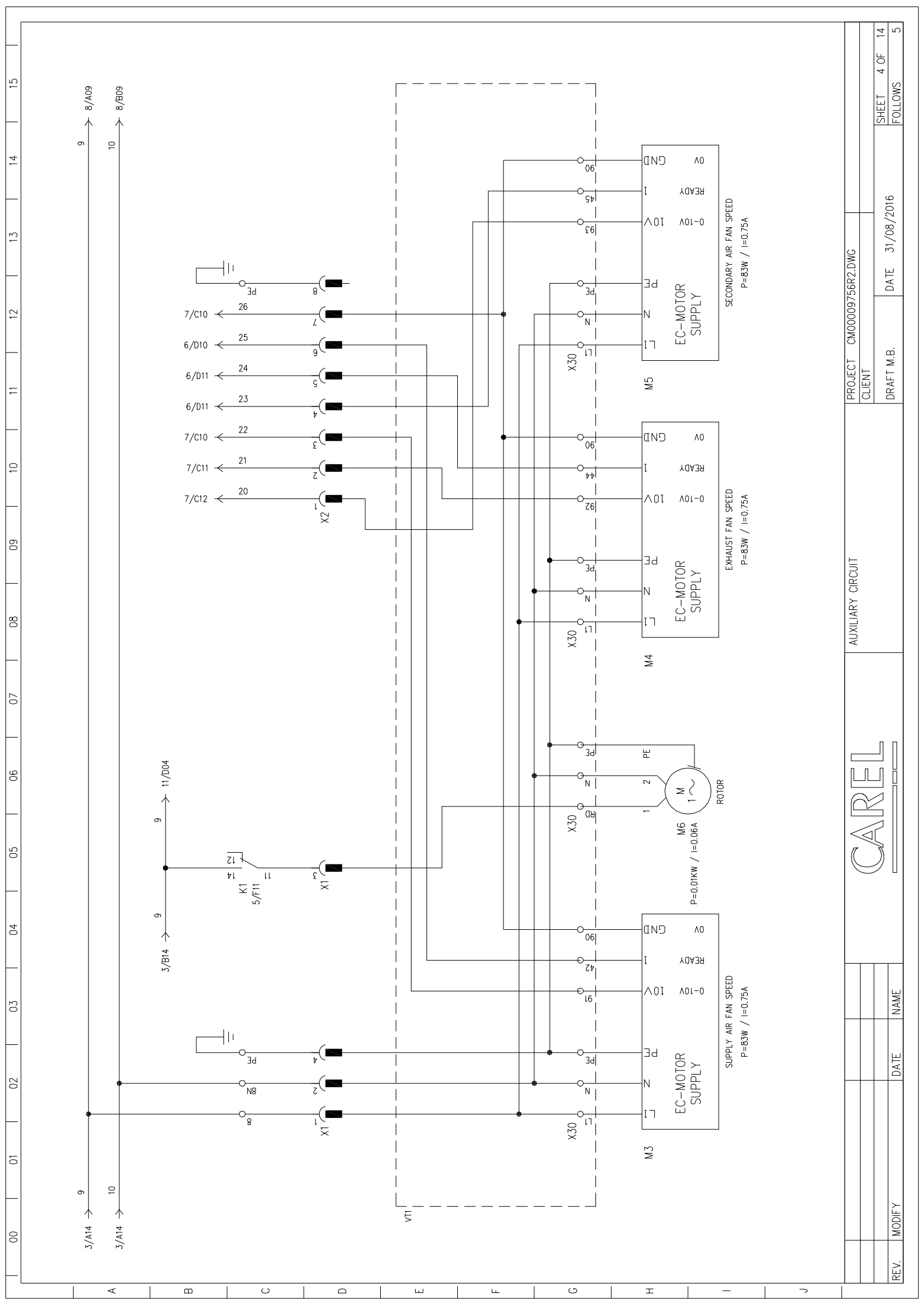
REV.	MODIFY	DATE	NAME

COMPRESSOR AND HEATING SUPPLY
230V / 50Hz
16A

ADDITIONAL HEATING
230V - 3KW

POWER SUPPLY
230V / 50Hz
16A

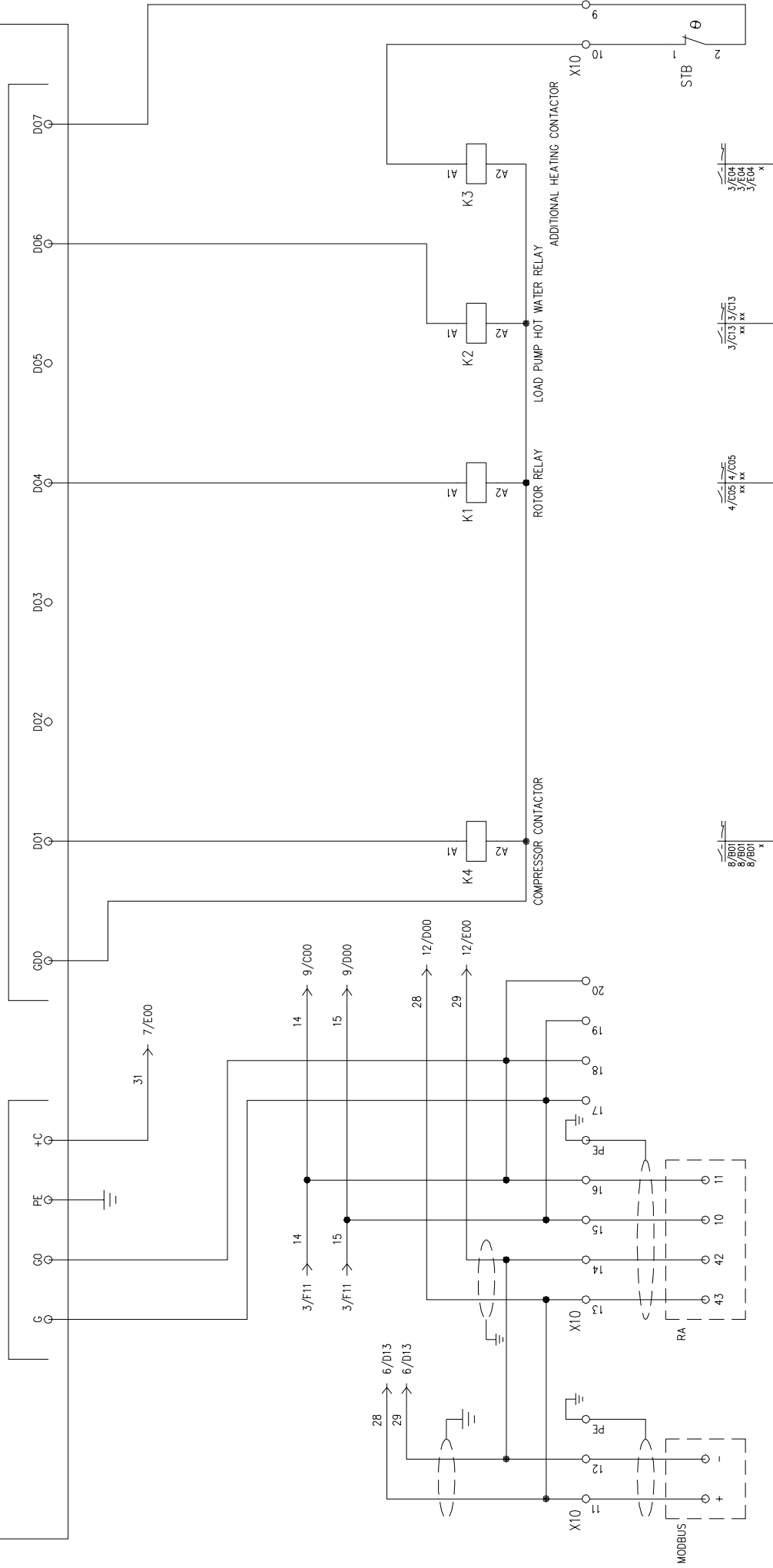
FREE VOLTAGE CONTACT
LOWER RATE OF EW



REV.		MODIFY	DATE	NAME	AUXILIARY CIRCUIT		PROJECT	CM00009756R2.DWG
					CAREL		CLIENT	
					DRAFT M.B.		DATE	31/08/2016
					SHEET		4 OF	14
					FOLLOWS			5

CORRIGO E28D-S

N1



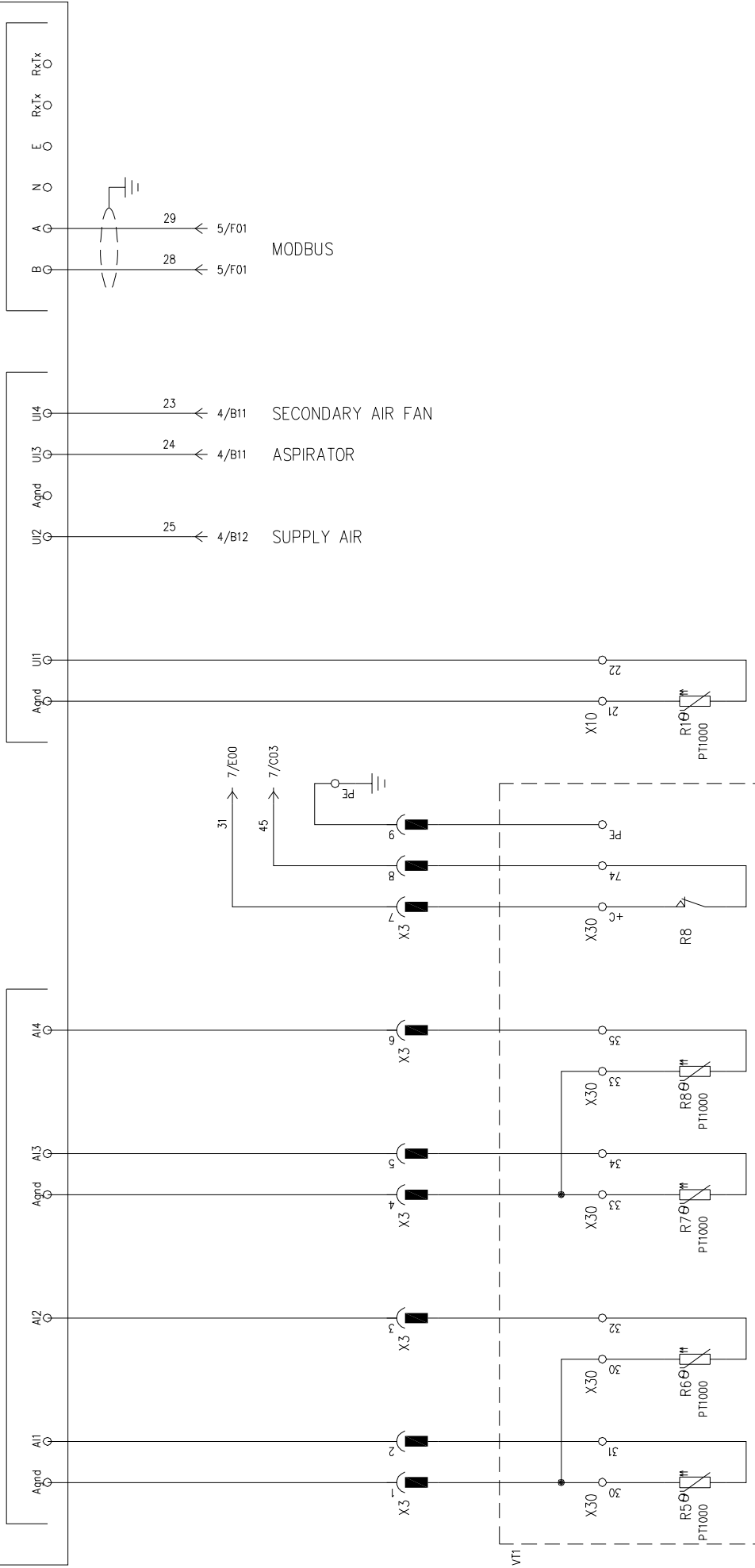
MODBUS EXTERNAL OPTION

ROOMCONTROLLERS

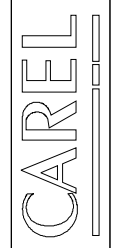
REV.		MODIFY	DATE	NAME	AUXILIARY CIRCUIT		PROJECT	CM00009756R2.DWG
REV.		MODIFY	DATE	NAME	AUXILIARY CIRCUIT		CLIENT	
REV.		MODIFY	DATE	NAME	AUXILIARY CIRCUIT		DRAFT M.B.	DATE
REV.		MODIFY	DATE	NAME	AUXILIARY CIRCUIT			31/08/2016
REV.		MODIFY	DATE	NAME	AUXILIARY CIRCUIT			SHEET
REV.		MODIFY	DATE	NAME	AUXILIARY CIRCUIT			5 OF
REV.		MODIFY	DATE	NAME	AUXILIARY CIRCUIT			14
REV.		MODIFY	DATE	NAME	AUXILIARY CIRCUIT			FOLLOWS
REV.		MODIFY	DATE	NAME	AUXILIARY CIRCUIT			6

CORRIGO E28D-S

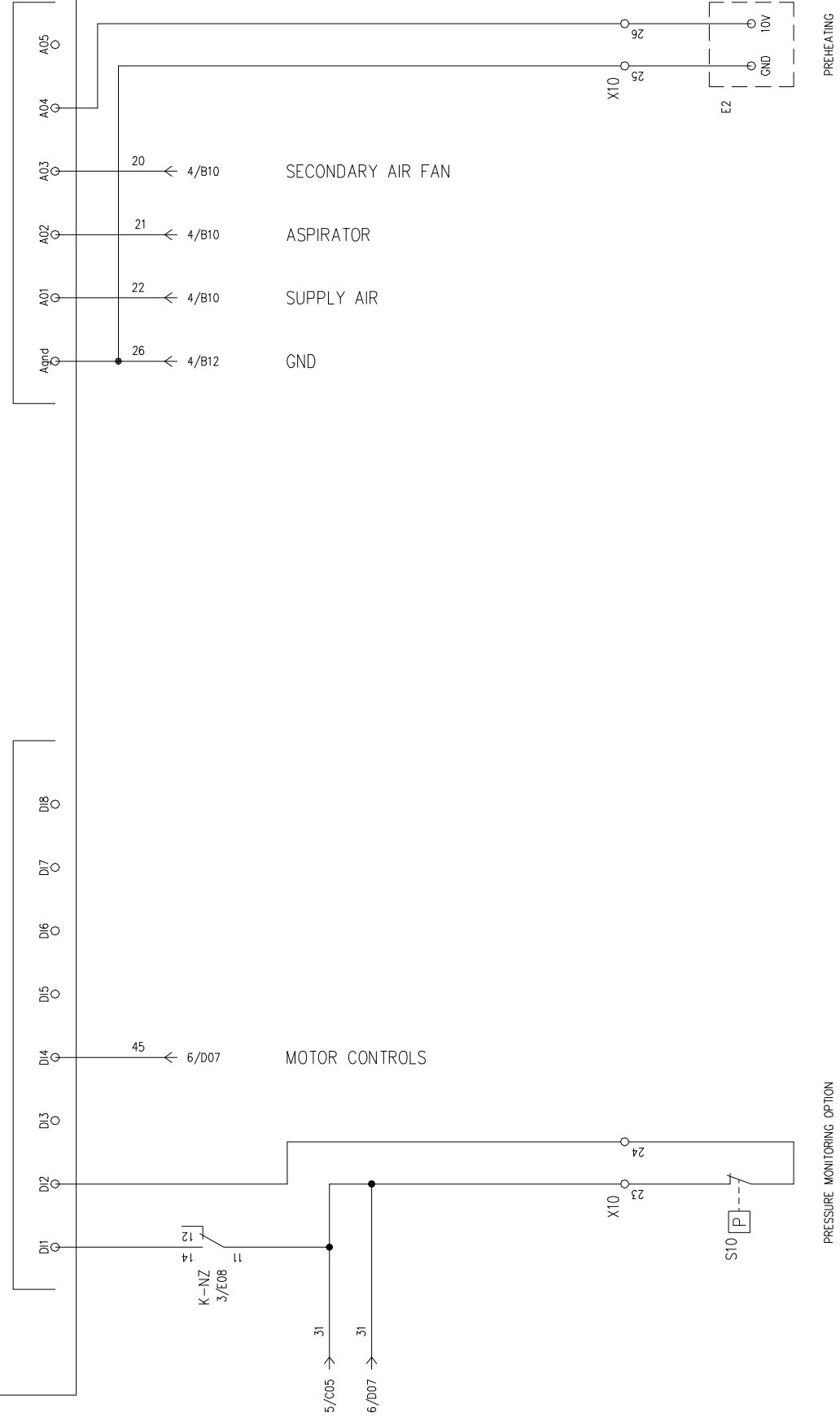
N1



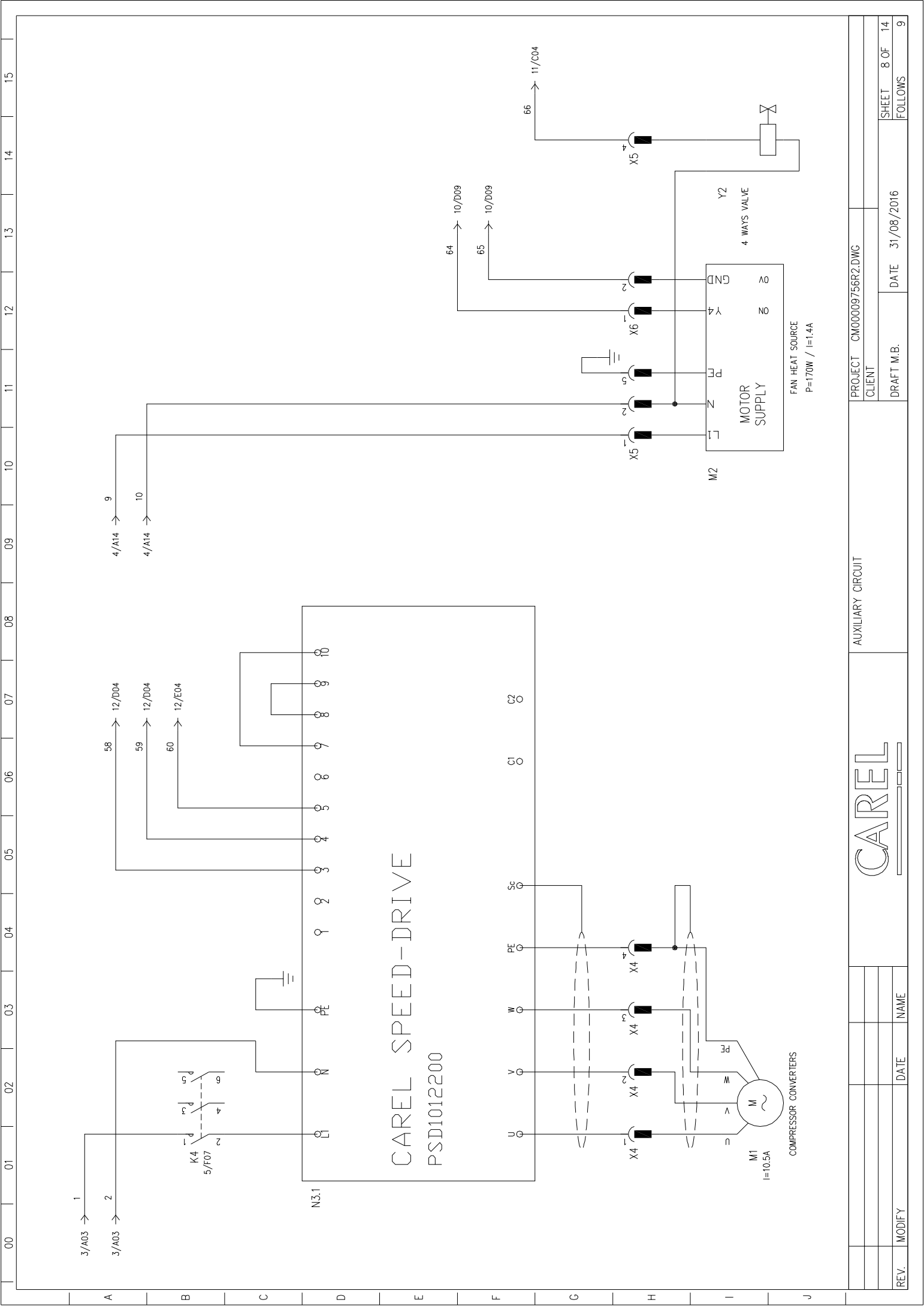
REV.	MODIFY	DATE	NAME	AUXILIARY CIRCUIT	PROJECT	CM00009756R2.DWG
					CLIENT	
				DRAFT M.B.	DATE	31/08/2016
					SHEET	6 OF 14
					FOLLOWS	7



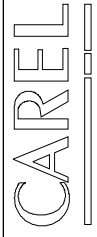
CORRIGO E28D-S

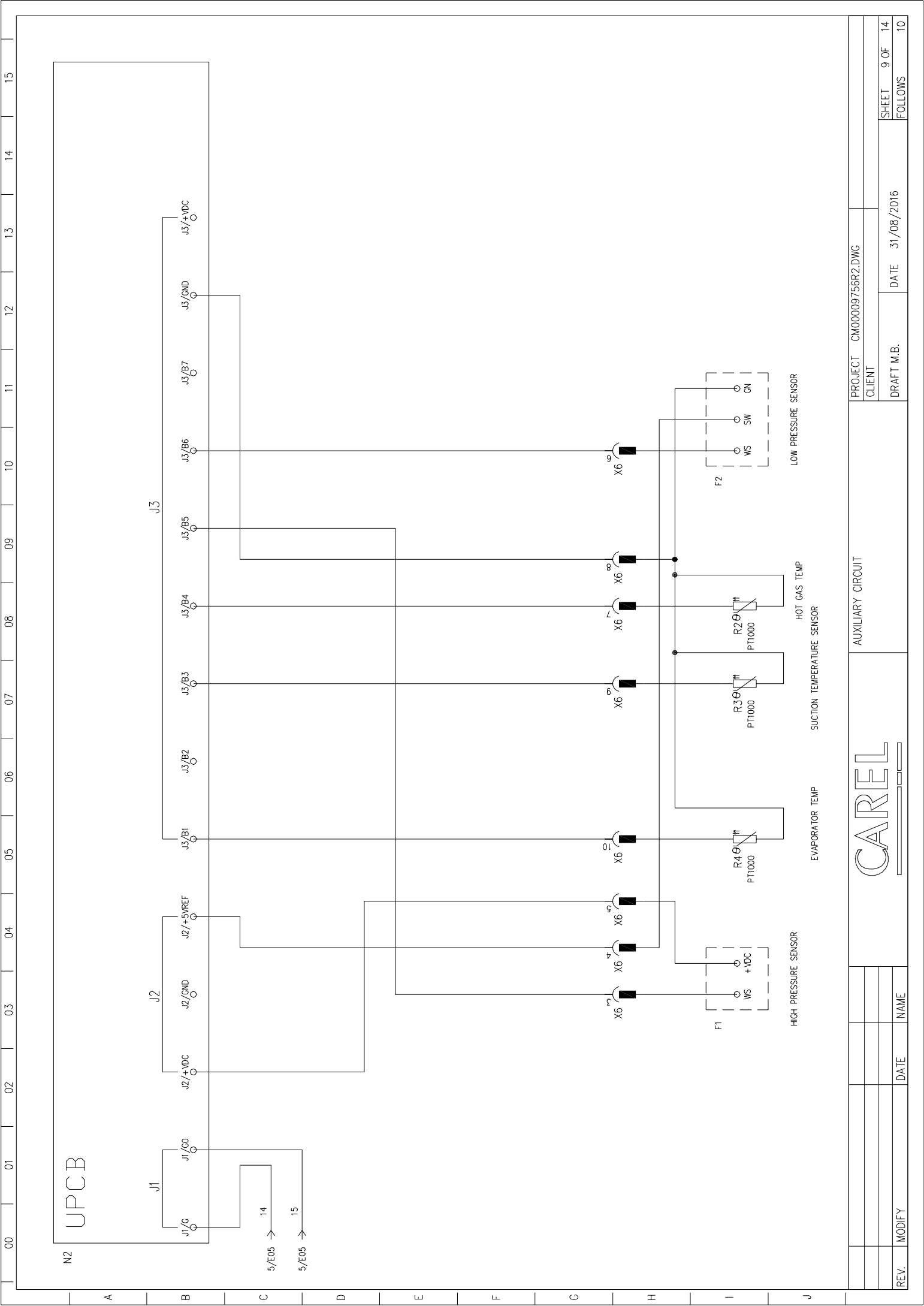


REV.	MODIFY	DATE	NAME	AUXILIARY CIRCUIT	PROJECT	CM00009756R2.DWG
					CLIENT	
				DRAFT M.B.	DATE	31/08/2016
					SHEET	7 OF 14
					FOLLOWS	8



PROJECT		CM00009756R2.DWG	
CLIENT			
DRAFT M.B.		DATE	31/08/2016
REV.	MODIFY	DATE	NAME
AUXILIARY CIRCUIT		SHEET	8 OF 14
		FOLLOWS	9





N2 UPCB

J1/G

J1/GND

J2/+VDC

J2/GND

J2/+5VREF

J3/B1

J3/B2

J3/B3

J3/B4

J3/B5

J3/B6

J3/B7

J3/GND

J3/+VDC

J3

J2

J1

5/E05 → 14

5/E05 → 15

F1

MS

+VDC

HIGH PRESSURE SENSOR

X6

X6

X6

X6

X6

X6

X6

X6

X6

X6

WS

SW

GN

LOW PRESSURE SENSOR

R4

PT1000

EVAPORATOR TEMP

R3

PT1000

SUCTION TEMPERATURE SENSOR

R2

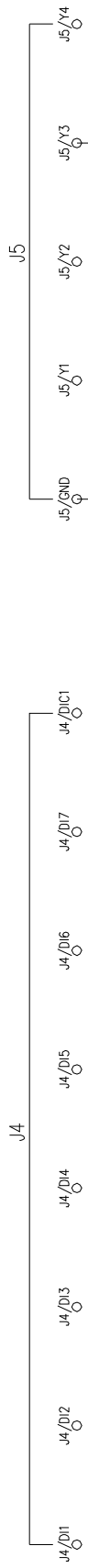
PT1000

HOT GAS TEMP

F2

PROJECT		CM00009756R2.DWG	SHEET		9 OF 14
CLIENT			DATE		31/08/2016
DRAFT M.B.			FOLLOWS		10
AUXILIARY CIRCUIT			CAREL		
REV.	MODIFY	DATE	NAME		

N2
UPCB



8/F13 → 64

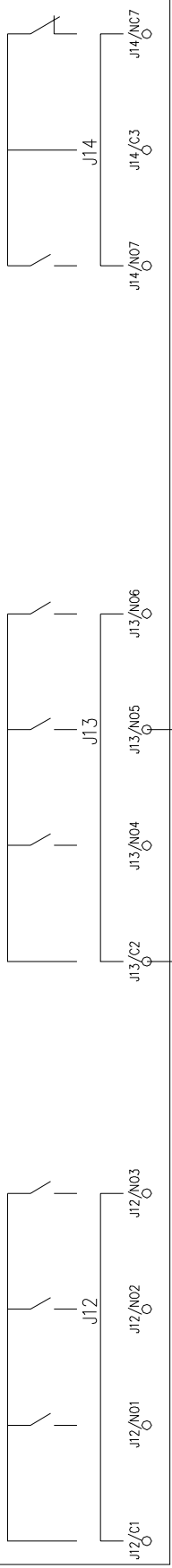
8/F13 → 65

PROJECT		CM00009756R2.DWG	
CLIENT			
DRAFT M.B.		DATE	31/08/2016
REV.	MODIFY	DATE	NAME
AUXILIARY CIRCUIT		PROJECT	
		CLIENT	
		DATE	
SHEET		10 OF 14	
FOLLOWS		11	

00 01 02 03 04 05 06 07 08 09 10 11 12 13 14 15

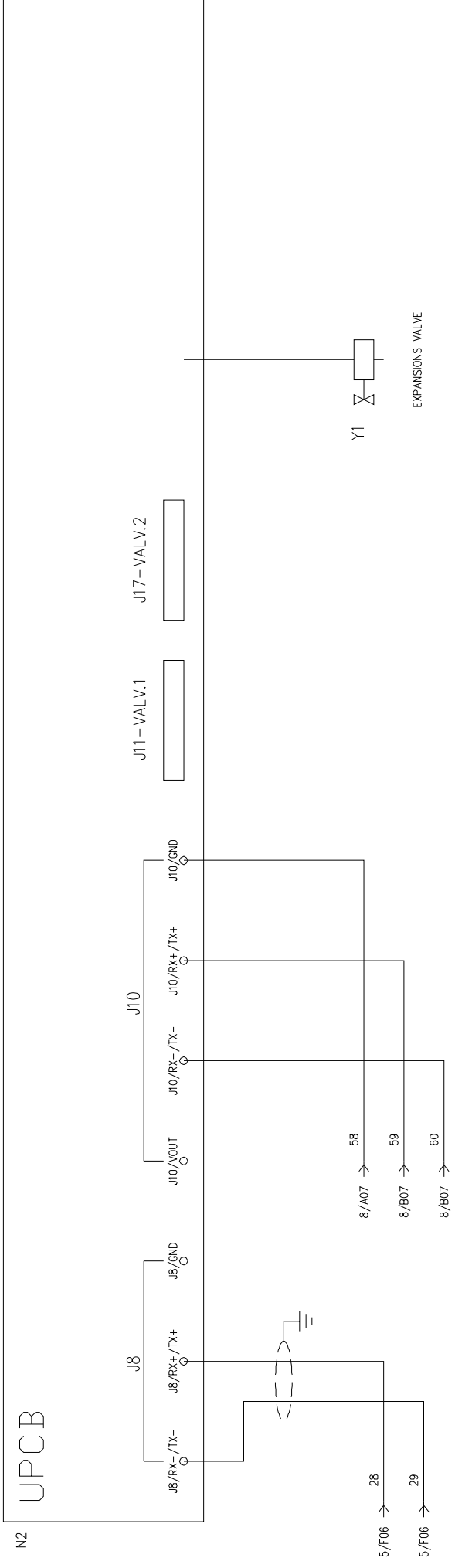
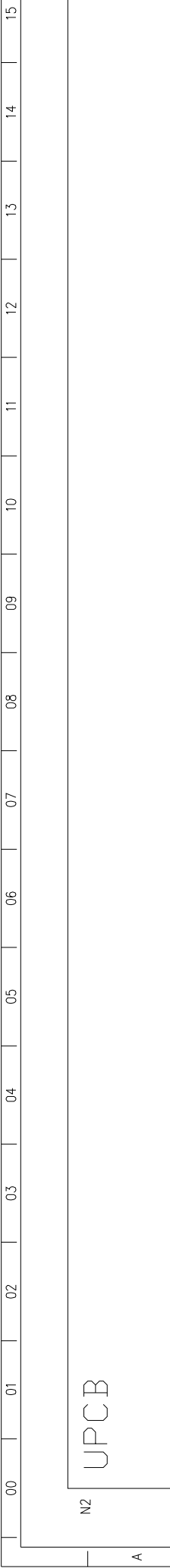
UPCB

N2



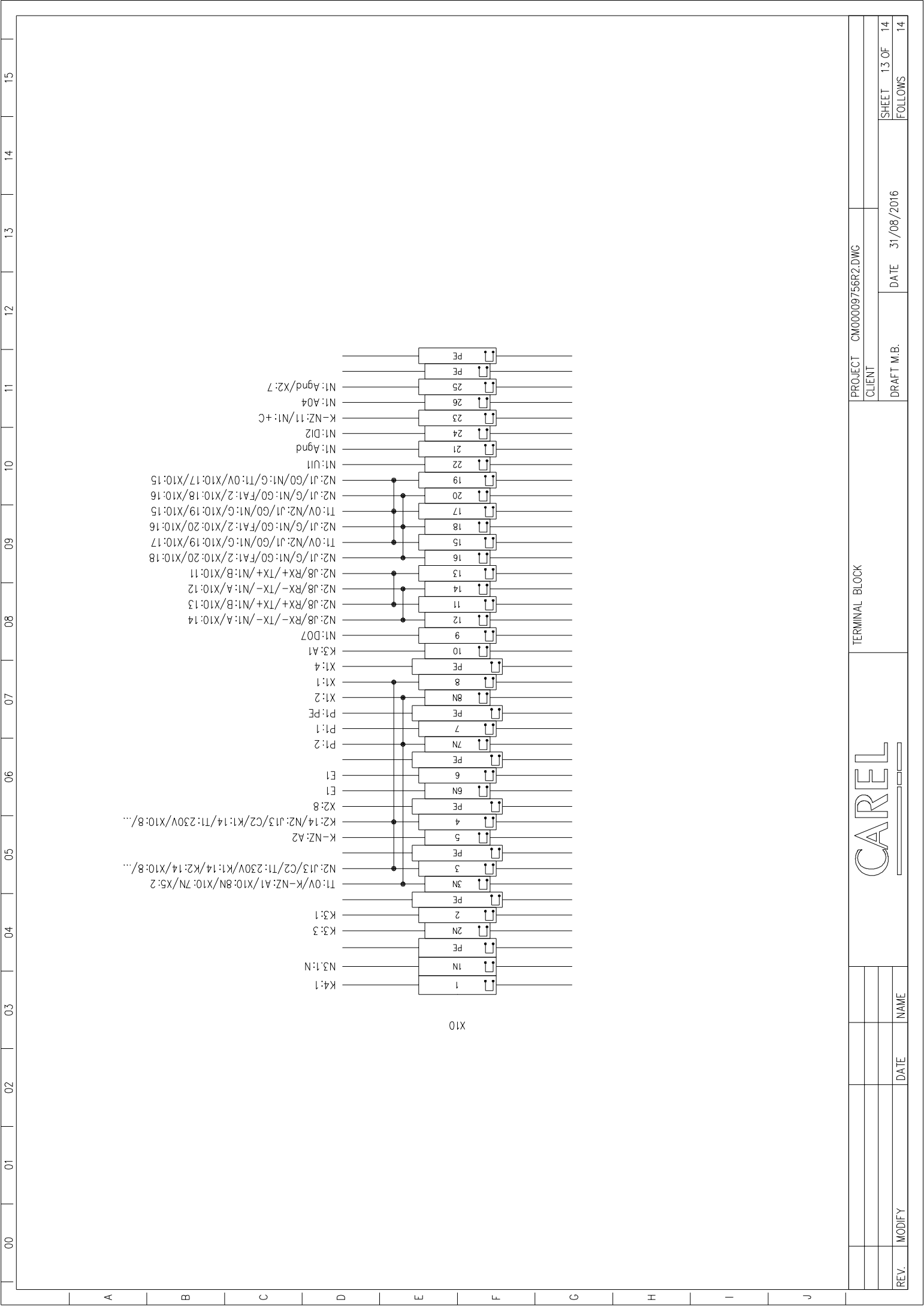
8/G15 → 66
4/B06 → 9

REV.	MODIFY	DATE	NAME	<h1>CAREL</h1>	AUXILIARY CIRCUIT	PROJECT CM00009756R2.DWG	
					CLIENT	DRAFT M.B.	DATE 31/08/2016
					SHEET 11 OF 14		FOLLOWS 12



COMPRESSOR CONTROL

	CAREL	CIRCUITO AUSILIARIO	PROJECT CM00009756R2.DWG
			CLIENT
			DRAFT M.B.
			DATE 31/08/2016
			SHEET 12 OF 14
			FOLLOWS 13
REV.	MODIFY	DATE	NAME



PROJECT CM00009756R2.DWG

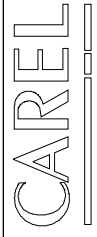
CLIENT

DATE 31/08/2016

DRAFT M.B.

SHEET 13 OF 14
FOLLOWS 14

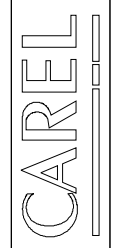
TERMINAL BLOCK



REV.	MODIFY	DATE	NAME

Sign	Description	Position	Description	Notes
E1	ADDITIONAL HEATING	3/H04		230V - 3kW
FA1	PROTECTION FUSE SECONDARY TRANSFORMER	3/D10	OMEGA	5X20 2A T
K1	ROTOR RELAY	5/F11	FINDER	40.61 24V
K2	LOAD PUMP HOT WATER RELAY	5/F12	FINDER	40.61 24V
K3	ADDITIONAL HEATING CONTACTOR	5/F14	MOELLER	DILM9-10 24V
K4	COMPRESSOR CONTACTOR	5/F07	MOELLER	DILM15-10 24V
K-NZ	RELAY	3/E08	FINDER	40.52 230V I=10.5A
M1	COMPRESSOR CONVERTERS	8/I01		P=170W / I=1.4A
M2	FAN HEAT SOURCE	8/I10		P=83W / I=0.75A
M3	SUPPLY AIR FAN SPEED	4/H02		P=83W / I=0.75A
M4	EXHAUST FAN SPEED	4/H08		P=83W / I=0.75A
M5	SECONDARY AIR FAN SPEED	4/H12		P=83W / I=0.75A
M6	ROTOR	4/H06		P=0.01KW / I=0.06A
N1	CONTROLLER 1	5/B02	SYSTEMAIR	CORRIGO 28
N2	CONTROLLER 2	9/B00	CAREL	UPCB001DS0
N3.1	SPEED-DRIVE	8/D01	CAREL	PSD1012200
P1	LOAD PUMP HOT WATER	3/H13		230V - 6/28W
T1	TRANSFORMER	3/C10	MARINI	100VA
X1	CONNECTOR	4/D02	PHOENIX	SP 2.5/ 4
X2	CONNECTOR	4/D10	PHOENIX	SP 2.5/ 8
X3	CONNECTOR	6/F01	PHOENIX	SP 2.5/10
X4	CONNECTOR	8/H01	PHOENIX	SP 2.5/ 4
X5	CONNECTOR	8/H10	PHOENIX	SP 2.5/ 5
X6	CONNECTOR	8/H12	PHOENIX	SP 2.5/10
X10	TERMINAL BLOCK	3/H01	PHOENIX	ST4 (1-1N-PE) ST2.5 3L(2N/8N) STTB2.5 (9/26)
Y2	4 WAYS VALVE	8/I14		

PART LIST



PROJECT CM00009756R2.DWG
CLIENT

DRAFT M.B. DATE 31/08/2016

SHEET 14 OF 14
FOLLOWS

REV.	MODIFY	DATE	NAME