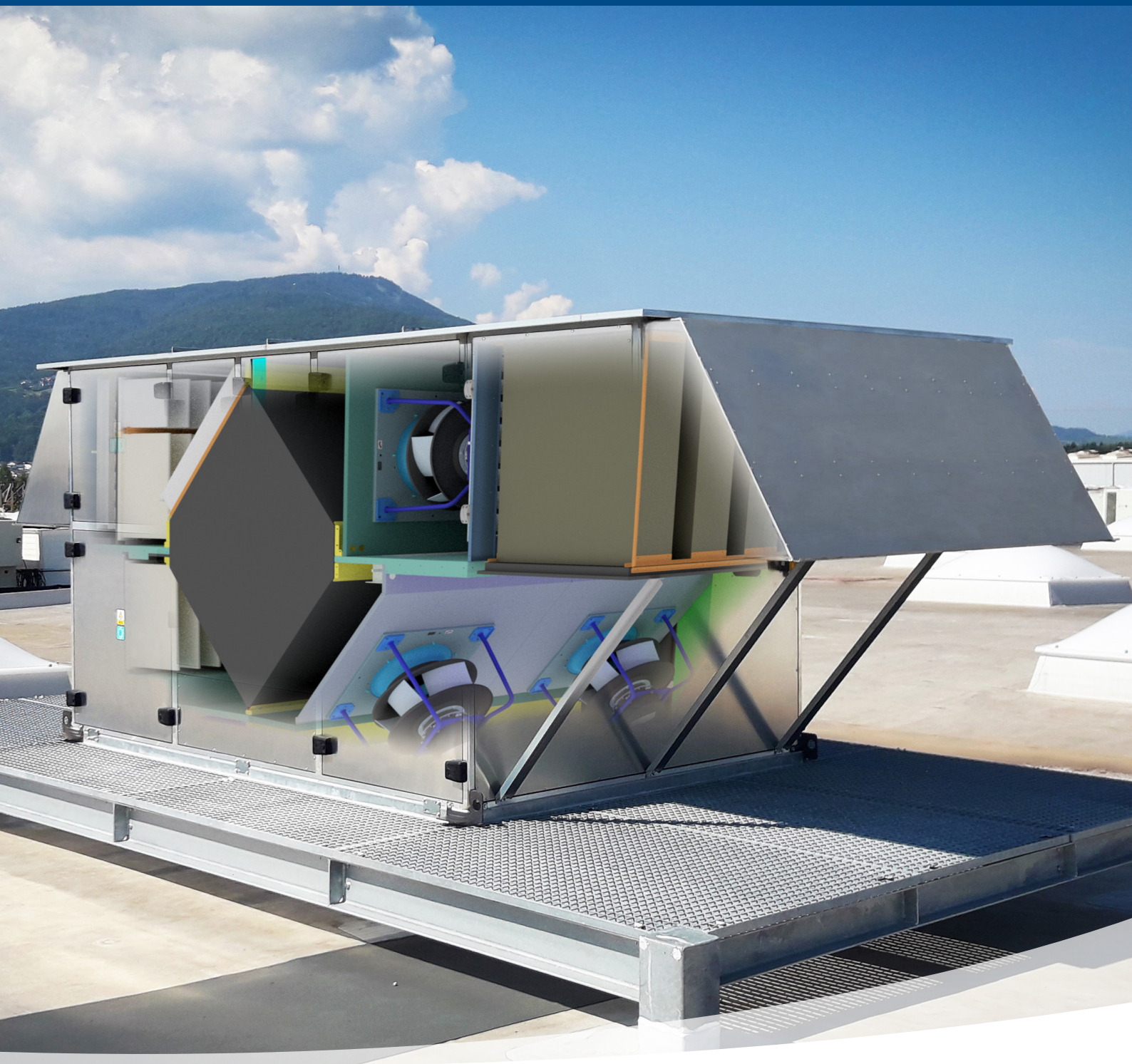


RoofLine - Quick overview

Heat recovery ventilation units for roof installation

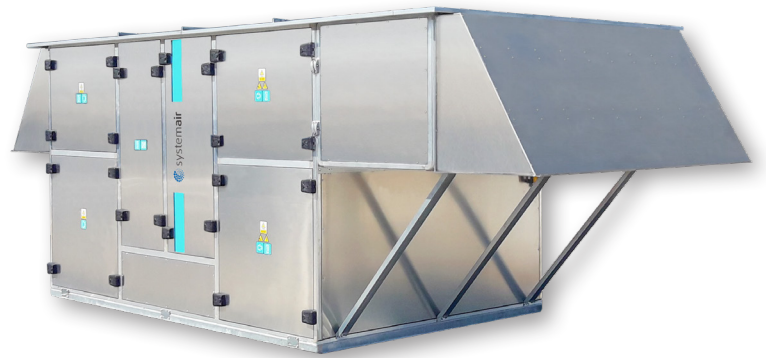


RoofLine

Roof ventilation units for energy-saving ventilation and heating of halls.

Systemair RoofLine roof ventilation units for peripheral ventilation with heat recovery and heating (version for heating and cooling possible as well) for exposition halls, fair halls, industrial buildings, storage buildings, gyms, multi-purpose buildings, indoor tennis centres, etc.

RoofLine units consist of: an outdoor unit, a roof frame and an indoor unit. Special roof air outlet for safe and draft-free air intake even in high buildings with RotaVent (rotating nozzle) or controlled swirl diffuser. Suction part with grilles or air duct connection for the exhaust air suction.



4

unit sizes.

13.000

Air flow up to 13.000 m³/h.

30

For room heights up to 30 m.

90

heat recovery efficiency up to 90 %.

- 4 unit sizes with airflow up to 13.000 m³/h
- Equal draft-free air and temperature distribution for room heights up to 30 m
- Compact, lightweight sea water resistant (AlMg3) casing
- Aluminium thermal break profiles
- High efficient counterflow plate heat exchanger with heat recovery efficiency up to 90 %
- Energy efficient plug fans with EC motors for quiet and long-life operation
- Integrated control system with master/slave control
- Easy integration of control system into building management system
- Flexible design of indoor part according to customer requirements
- Large inspection doors for easy maintenance
- For building retrofitting and different roof designs
- No duct system necessary
- Combination of units with fresh air and recirculation air
- Sound attenuator for exhaust and supply air optional
- Water heating coil, water cooling coil or reversible coil optional

Outdoor unit

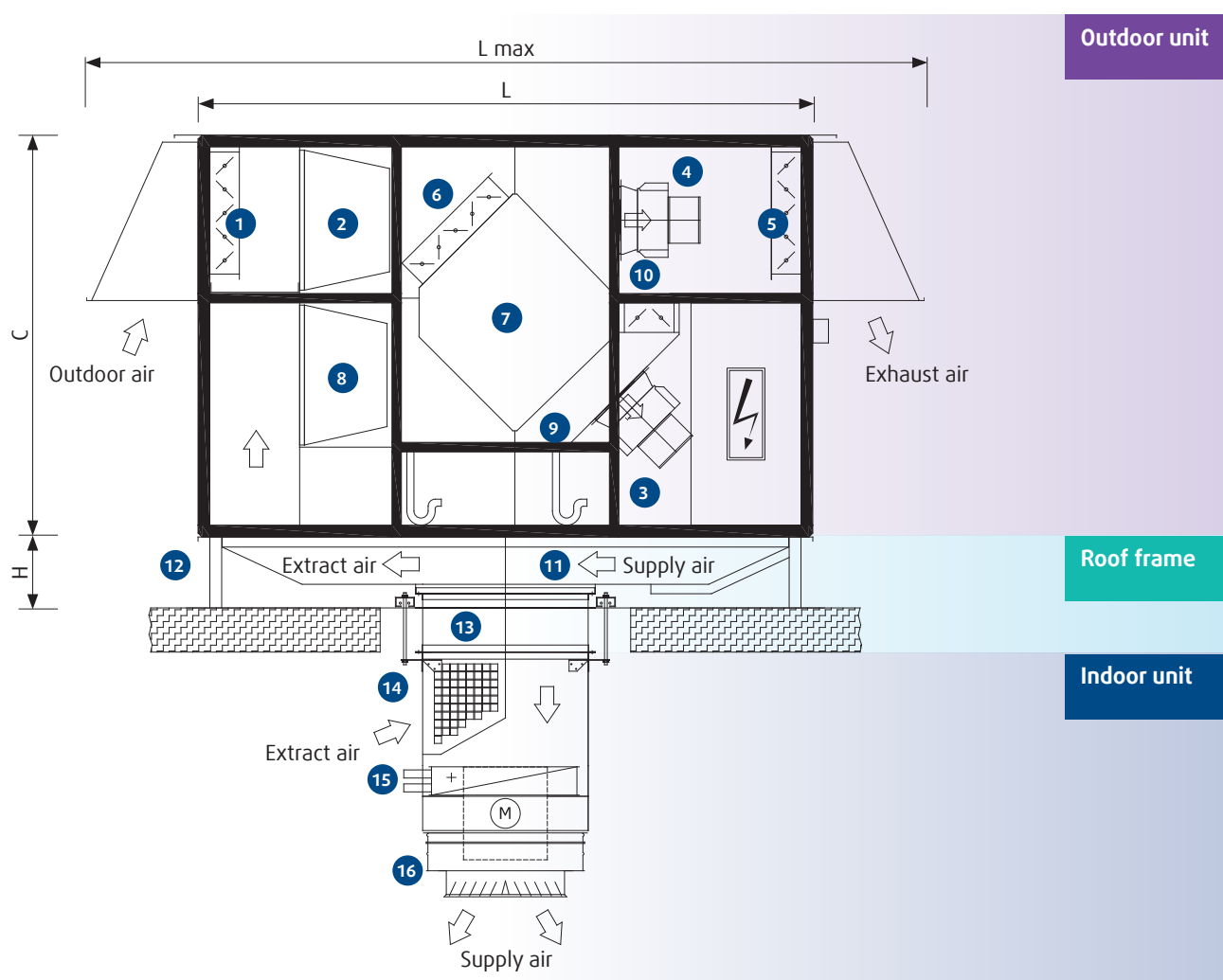
With fully insulated, corrosion-resistant casing, low in weight, produced fully from salt-water-resistant aluminium alloy AlMg3, double-shell wall panels with intermediate insulation made of non-flammable mineral fibre boards according to DIN 1643 with an insulation thickness of 50 mm. Suction and exhaust openings with driving-rain-proof rain hoods made of aluminium and protective bird screens.

Roof frame

Adaptable to the specific installation situation and roof construction (for flat, sloped and double sloped roofs). Made of aluminium AlMg3, for the installation of the RoofLine outdoor unit.

Indoor unit

Direct air supply and air extraction without ducts, with possibility of installation of water heating coil, water cooling coil or reversible coil (heating / cooling), self-supporting casing, air distribution element (RotaVent - rotating nozzle and/or swirl diffuser), extract air grille or design for duct connection.



- | | | |
|----------------------|--------------------------------|---|
| 1 Outdoor air damper | 7 Plate heat exchanger | 13 Transition duct piece |
| 2 Outdoor air filter | 8 Extract air filter | 14 Extract air grid |
| 3 Supply fan | 9 Siphon | 15 Heating coil |
| 4 Extract fan | 10 Recirculating air damper | 16 RotaVent (rotating nozzle) or swirl diffuser |
| 5 Exhaust air damper | 11 Supply and extract air duct | |
| 6 Bypass damper | 12 Roof frame | |

Technical data

Unit type / size			035	063	080	130
Nominal air volume		m³/h	3500	6500	8000	12700
Motor power		kW	2 x 1,23	2 x 2,5	4 x 1,10	4 x 1,74
Rated motor current		A	2 x 1,9	2 x 3,8	4 x 1,7	4 x 2,7
Supply voltage		V	400	400	400	400
Length	L	mm	2600	2880	2880	3300
Total length	L max	mm	3540	4120	4120	4940
Width	B	mm	1320	1580	1950	2240
Height	C	mm	1700	1800	1800	2100
Weight without roof frame approx.		kg	525	650	780	990
Height of flat roof frame	H	mm	300	300	300	300
Roof frame weight		kg	70	90	105	130

