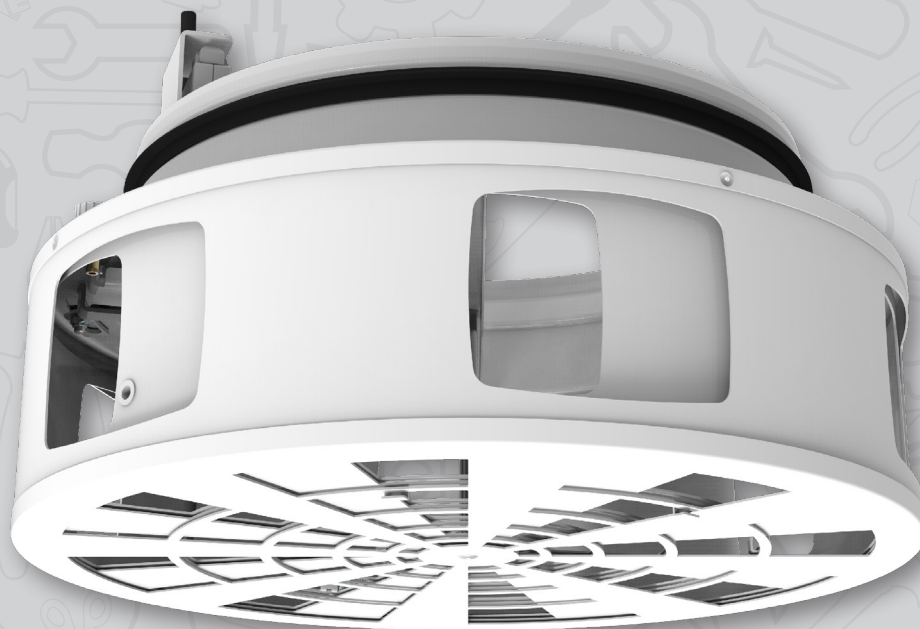


## BURE

Deckenauslass für große Volumenströme

Bedienungsanleitung

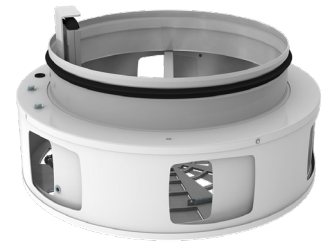




BURE-HC



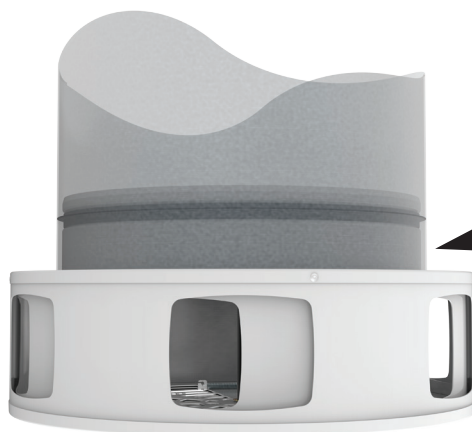
BURE-M2



BURE-MC

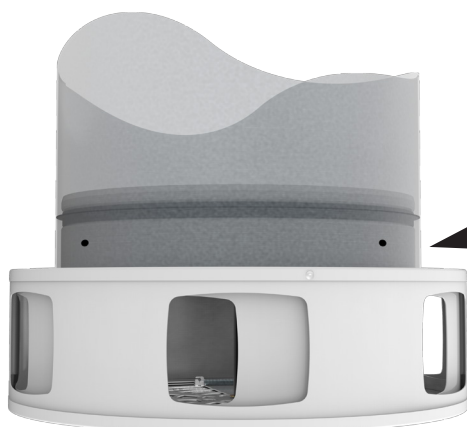


1.

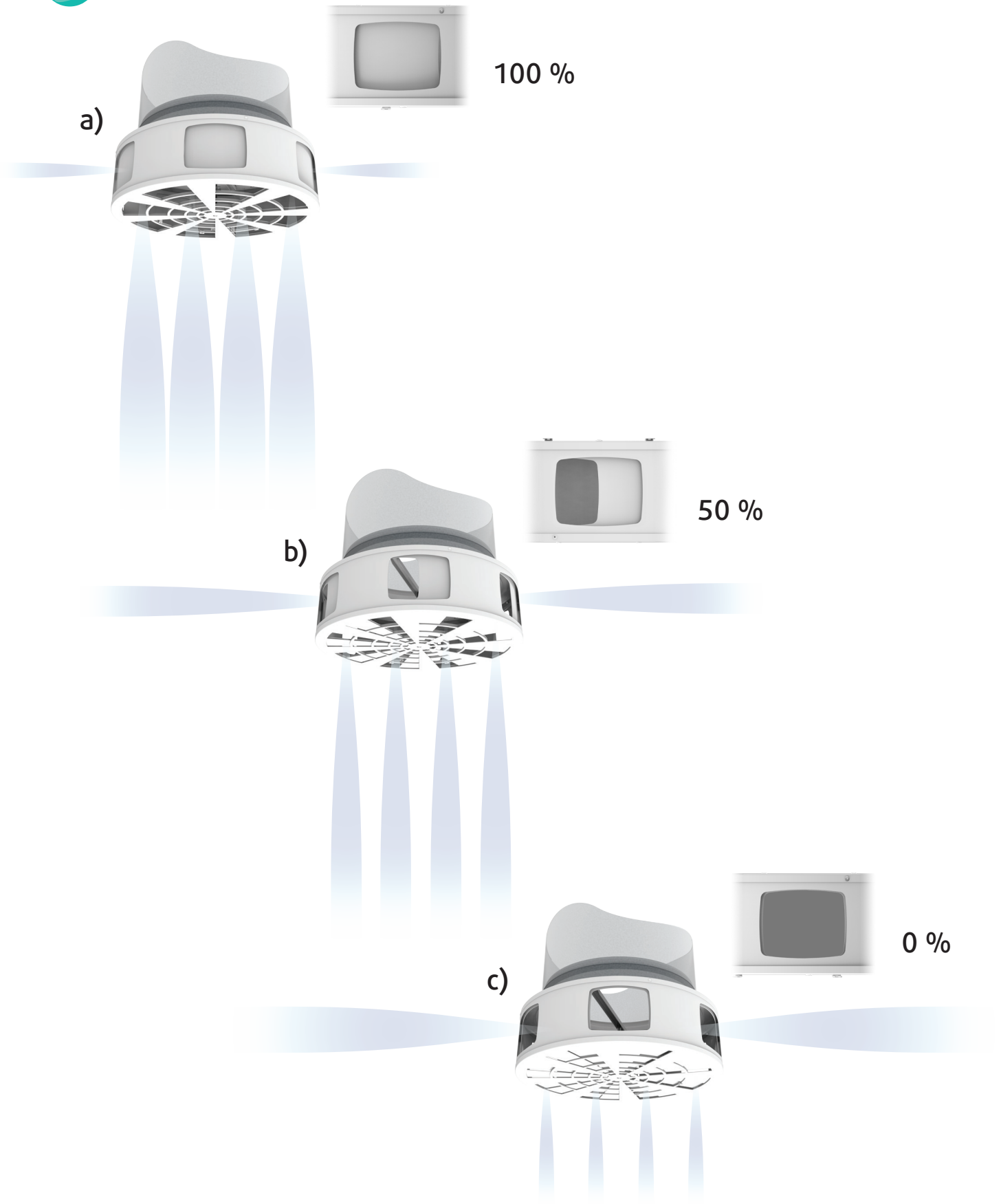


3 × Ø 3,5 mm

2.



3 × Ø 4 mm





BURE...

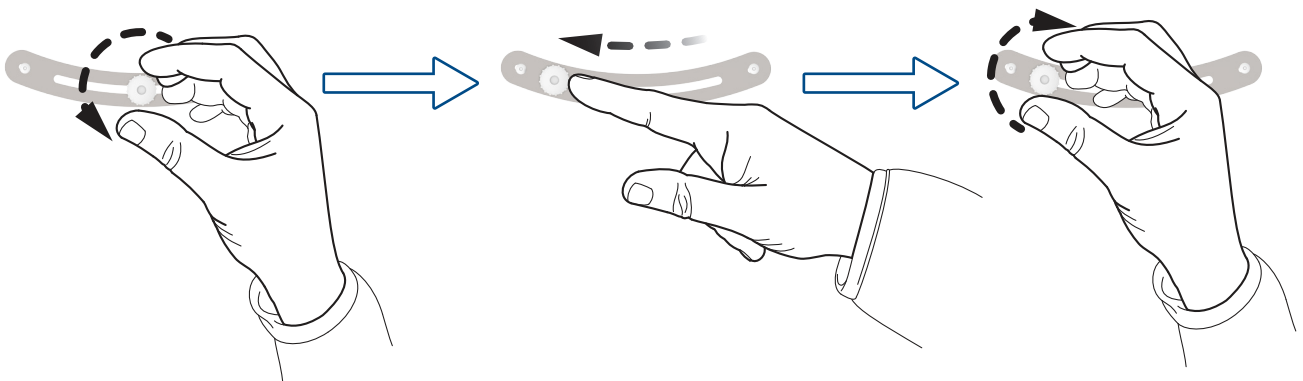
-HC

-M2

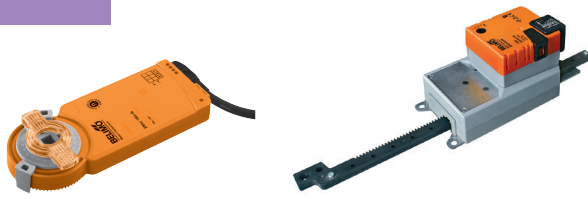
-MC

-HC

P5... P3 ... P1



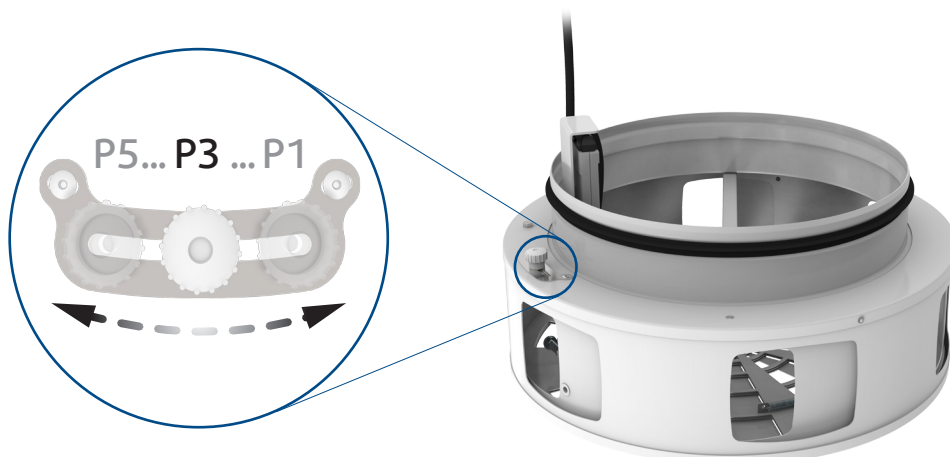
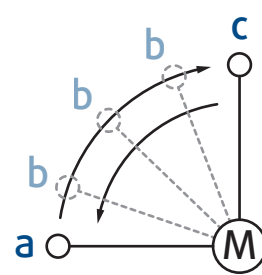
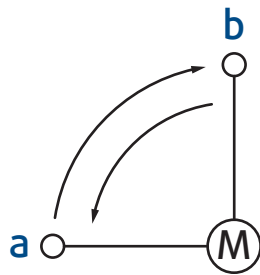
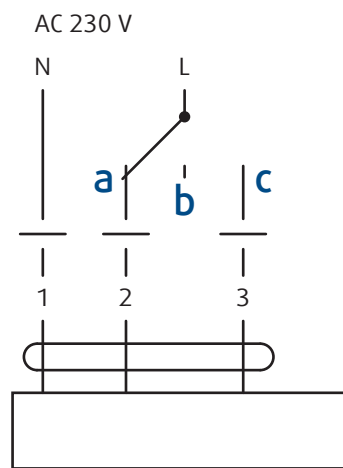
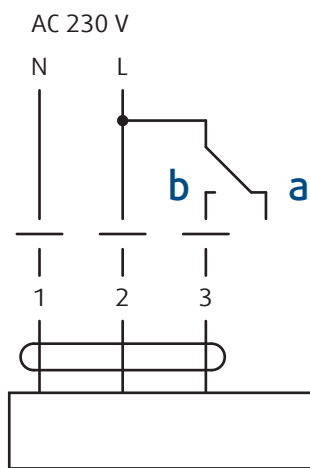
-M2



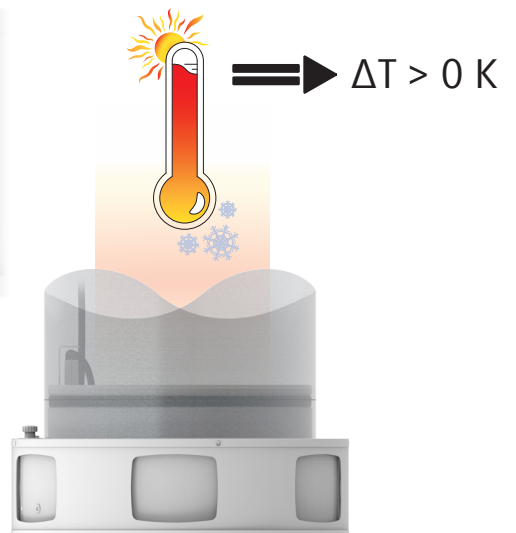
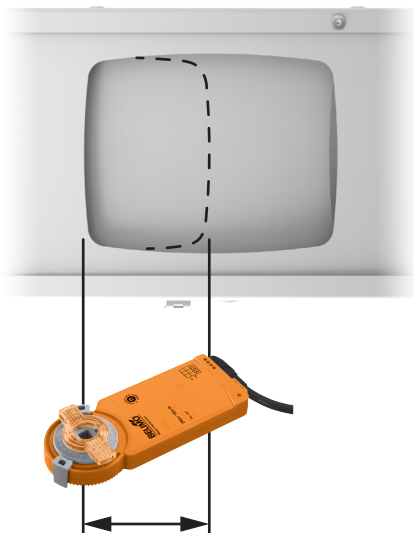
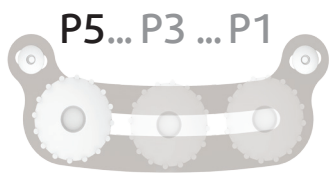
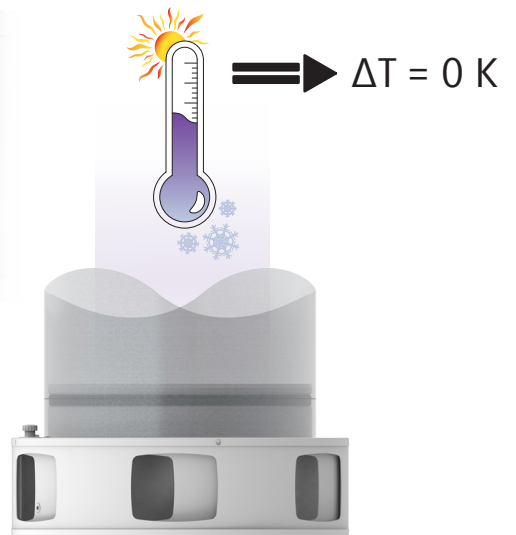
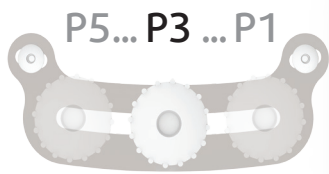
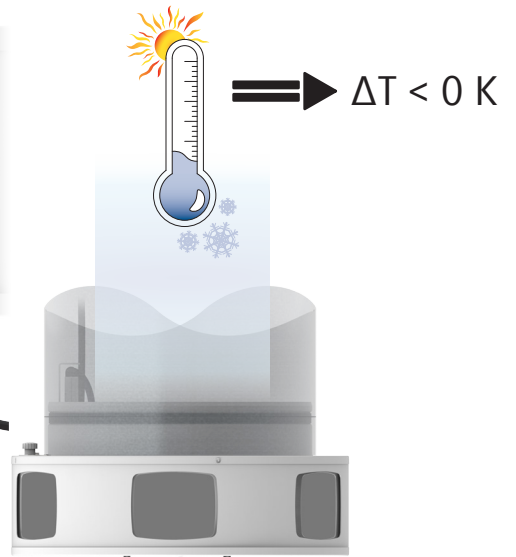
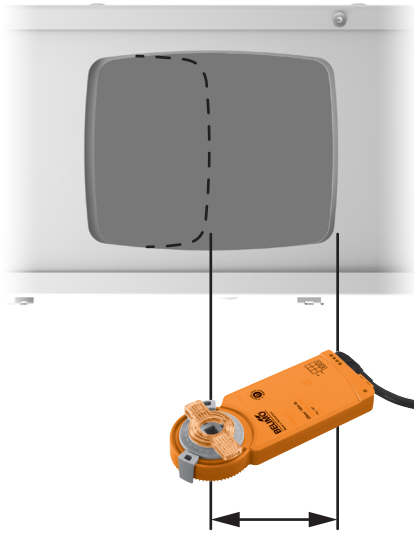
**CM230-F10-L / LH230A100**

BURE-M2-250  
BURE-M2-315

BURE-M2-400  
BURE-M2-500  
BURE-M2-630



-M2

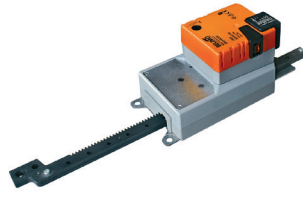


-MC



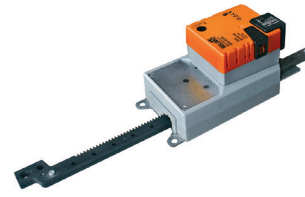
CM24-SR-F10

BURE-MC-250  
BURE-MC-315



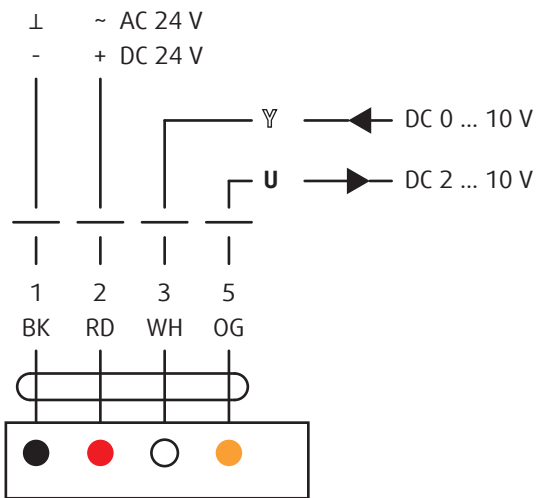
LH24A-MF100

BURE-MC-400



LH24A-MF200

BURE-MC-500  
BURE-MC-630



$\Upsilon = 10\text{ V}$



$\Upsilon = 5\text{ V}$



$\Upsilon = 0\text{ V}$



°C -40°C ... +80°C

°C -10°C ... +50°C

% ≤ 95%

% ≤ 95%

